



UNITED STATES COURTHOUSE

JACKSON, MISSISSIPPI

ARCHITECT:
H3
H3 HARDY COLLABORATION ARCHITECTURE.
www.h3hc.com
902 BROADWAY, 18TH FLOOR
NEW YORK, NEW YORK 10010

LOCAL ARCHITECT:
DALE AND ASSOCIATES ARCHITECTS, P.A.
ONE JACKSON PLACE, SUITE 230
188 E. CAPITOL STREET
JACKSON, MS 39201

STRUCTURAL ENGINEER:
WALTER P. MOORE
1845 WOODALL RODGERS FRWY., SUITE 1650
DALLAS, TX 75201-2287

MECHANICAL/PLUMBING ENGINEER:
COOKE DOUGLASS FARR LEMONS
3783 155 NORTH, STE 101
JACKSON, MS 39211

ELECTRICAL ENGINEER:
WATKINS O'GWYNN
4333 OFFICE PARK DRIVE
JACKSON, MS 39206

CIVIL ENGINEER:
SPENCER-ENGINEERS, INC.
P.O. BOX 4228
JACKSON, MS 39206

LIGHTING:
FISHER MARANTZ STONE
22 WEST 19TH STREET
NEW YORK, NY 10011

ACOUSTICS:
POLYSONICS
5115 MACARTHUR BLVD, NW
WASHINGTON, D.C. 20016

BLAST ENGINEERING:
HINMAN CONSULTING ENGINEERS
350 FIFTH AVENUE, SUITE 4715
NEW YORK, NY 10118

FIRE AND LIFE SAFETY:
ROLF JENSEN & ASSOCIATES
13831 NORTHWEST FREEWAY, SUITE 330
HOUSTON, TX 77040

SECURITY:
SYSTECH GROUP INC.
11280 ROGER BACON DRIVE, SUITE 501
RESTON, VA 20190

COURTS SECURITY:
TYGO FIRE & SECURITY ADT
3601 EISENHOWER AVENUE, THIRD FLOOR
ALEXANDRIA, VA 22304

COURTS TECHNOLOGY:
ELECTRONICS INTERIORS, INC.
1310 SIBLEY MEMORIAL HIGHWAY
MENDOTA, WI 53150

LEED CONSULTING:
THE EPSTEIN GROUP, INC.
303 PERKINS STREET
ATLANTA, GA 30307

VERTICAL TRANSPORTATION:
VAN DEUSEN ASSOCIATES
5 REGENT STREET, SUITE 524
LIVINGSTON, NJ 07039

COST ESTIMATING:
CONSTRUCTION COST SYSTEMS
200 WEST 22ND STREET, SUITE 209
LOMBARD, IL 60148

SIGNAGE:
TWO TWELVE ASSOCIATES, INC.
902 BROADWAY, 20TH FLOOR
NEW YORK, NY 10010

MARK DATE DESCRIPTION
8/16/2007 VE CHANGES

CONTRACTORS' GRAPHIC SCALE

PROJECT BUILDING PROJECT DESCRIPTION PROJECT NO. SUBMISSION SUB. DATE

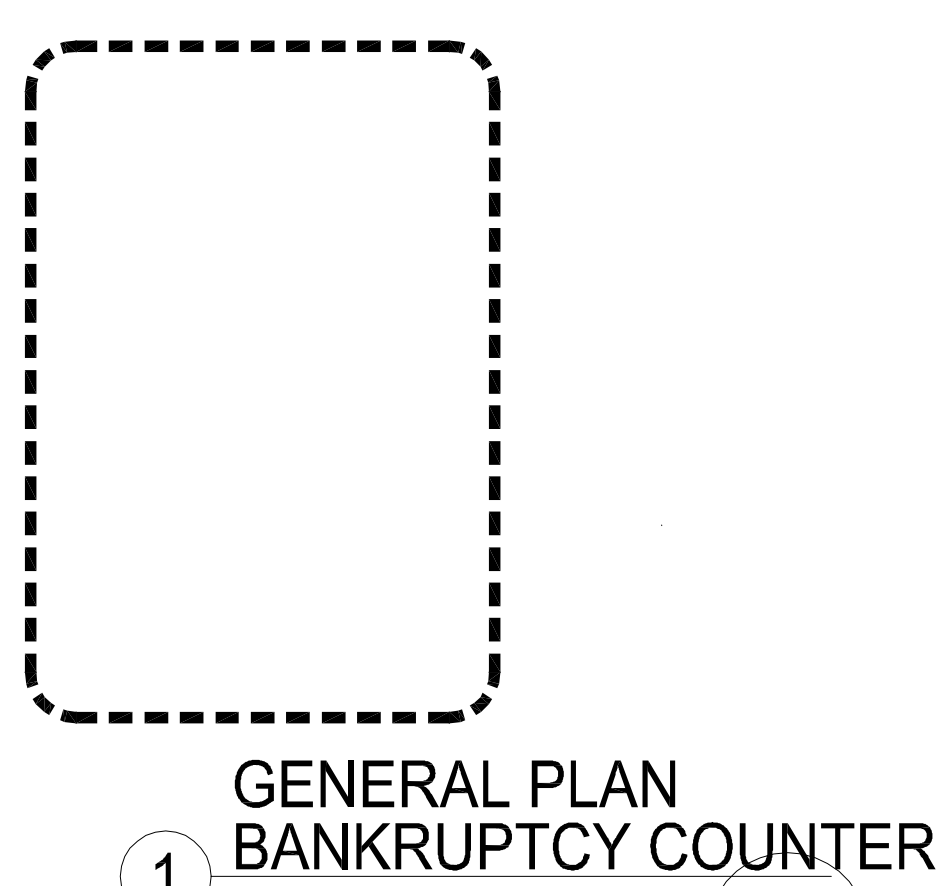
DRAWING TITLE FILE NAME FLOOR NO. DRAWN BY CHECKED BY DATE DRAFTED: SHEET SIZE: 914 X 1219

DRAWING NO. DISCIPLINE SHEET TYPE OF

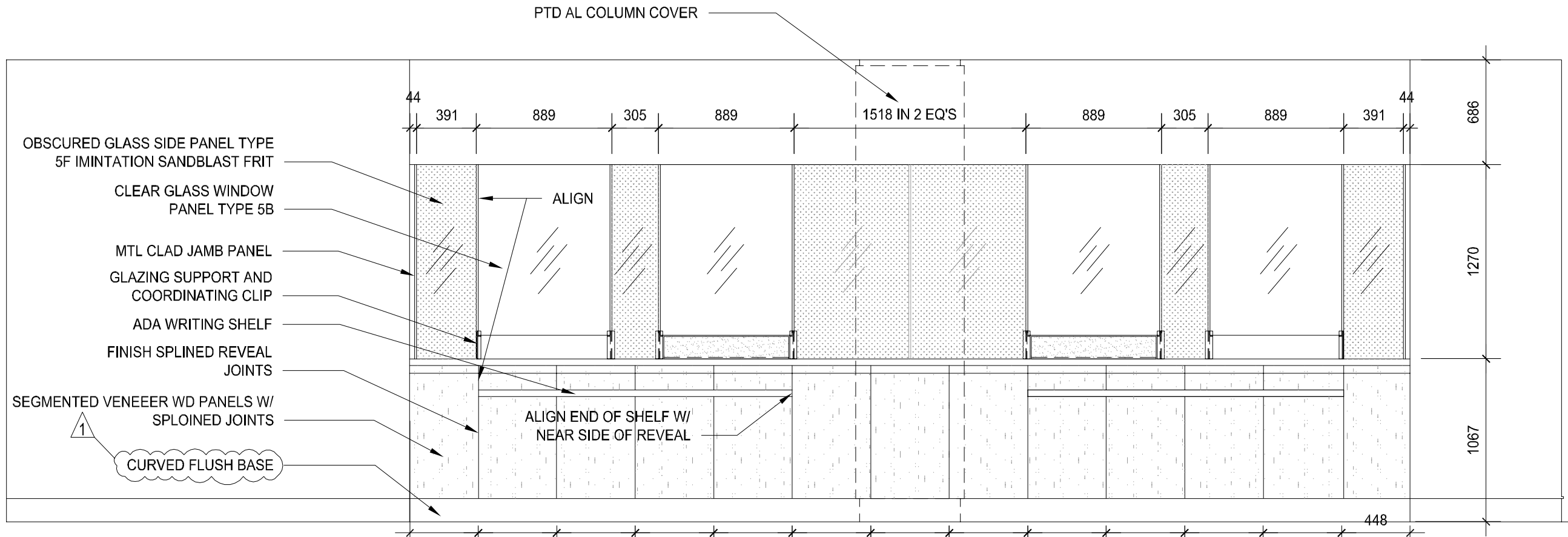
SEQUENCE

A724

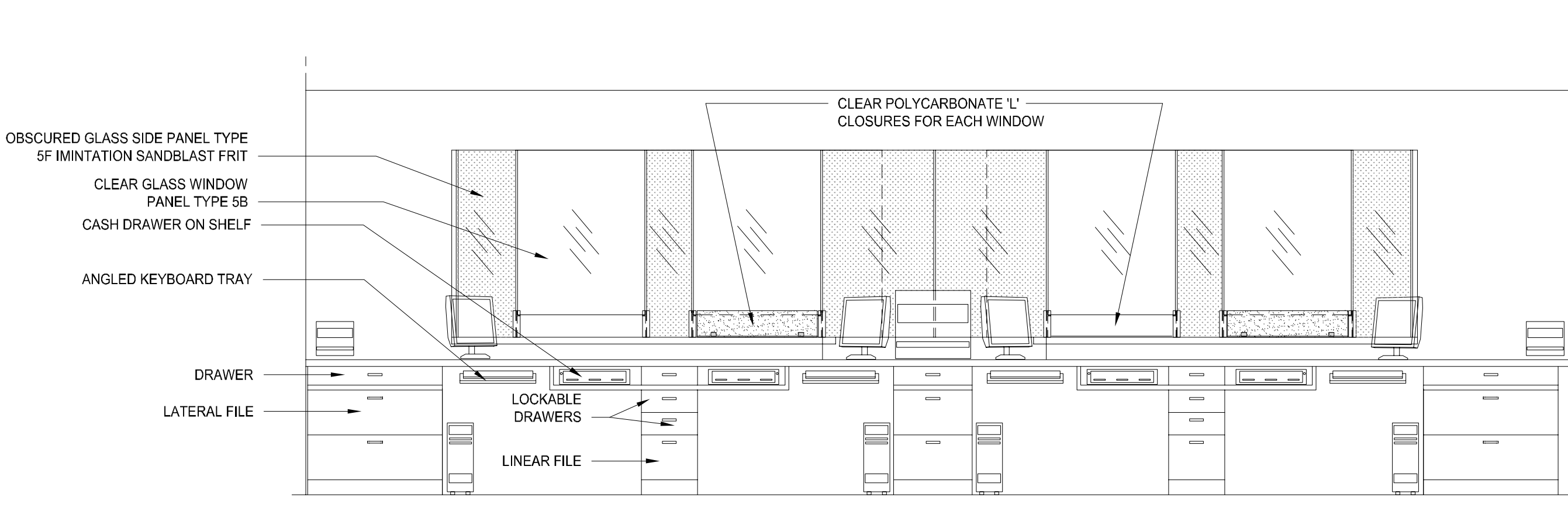
OF



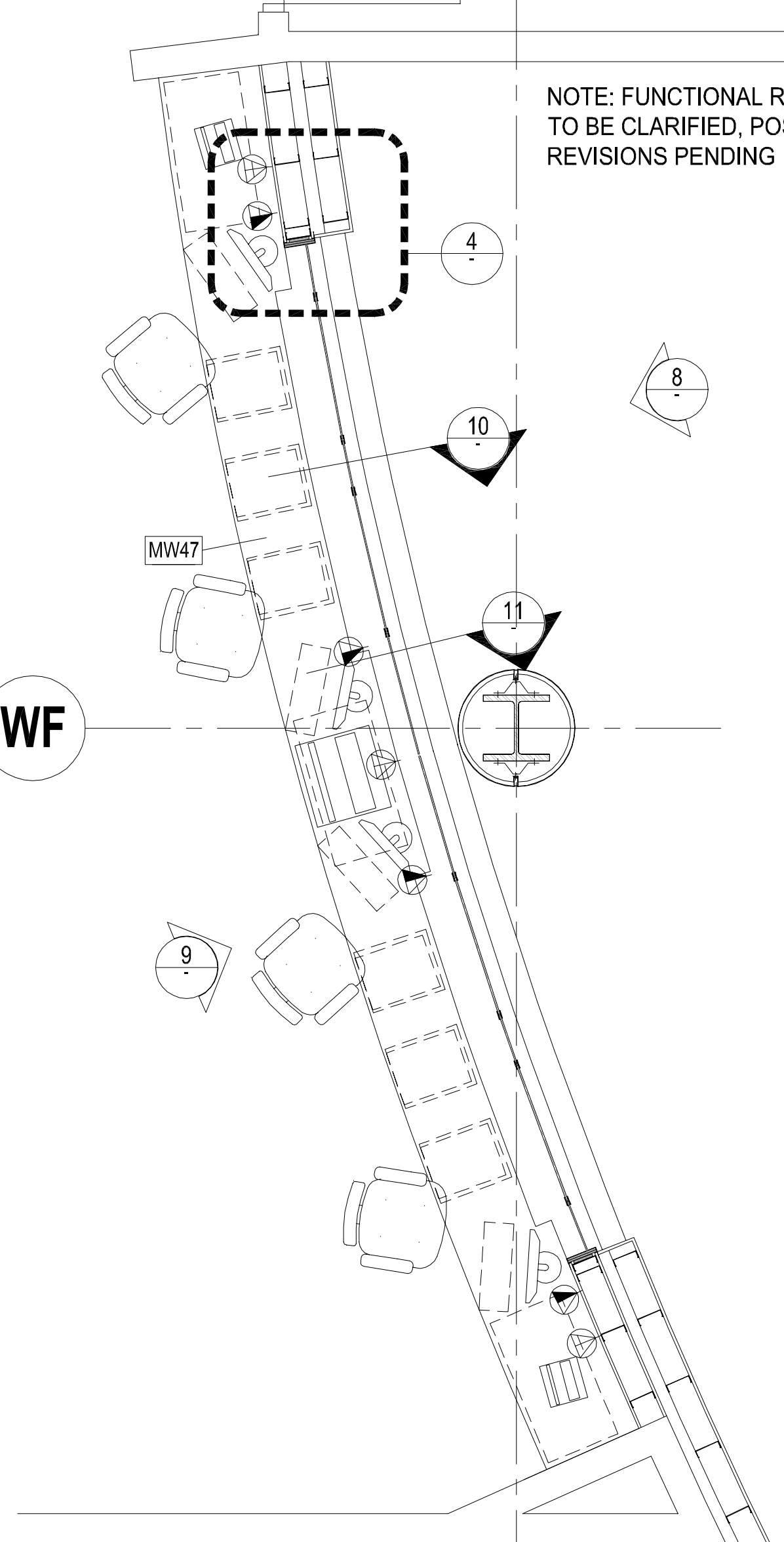
GENERAL PLAN BANKRUPTCY COUNTER
1:50



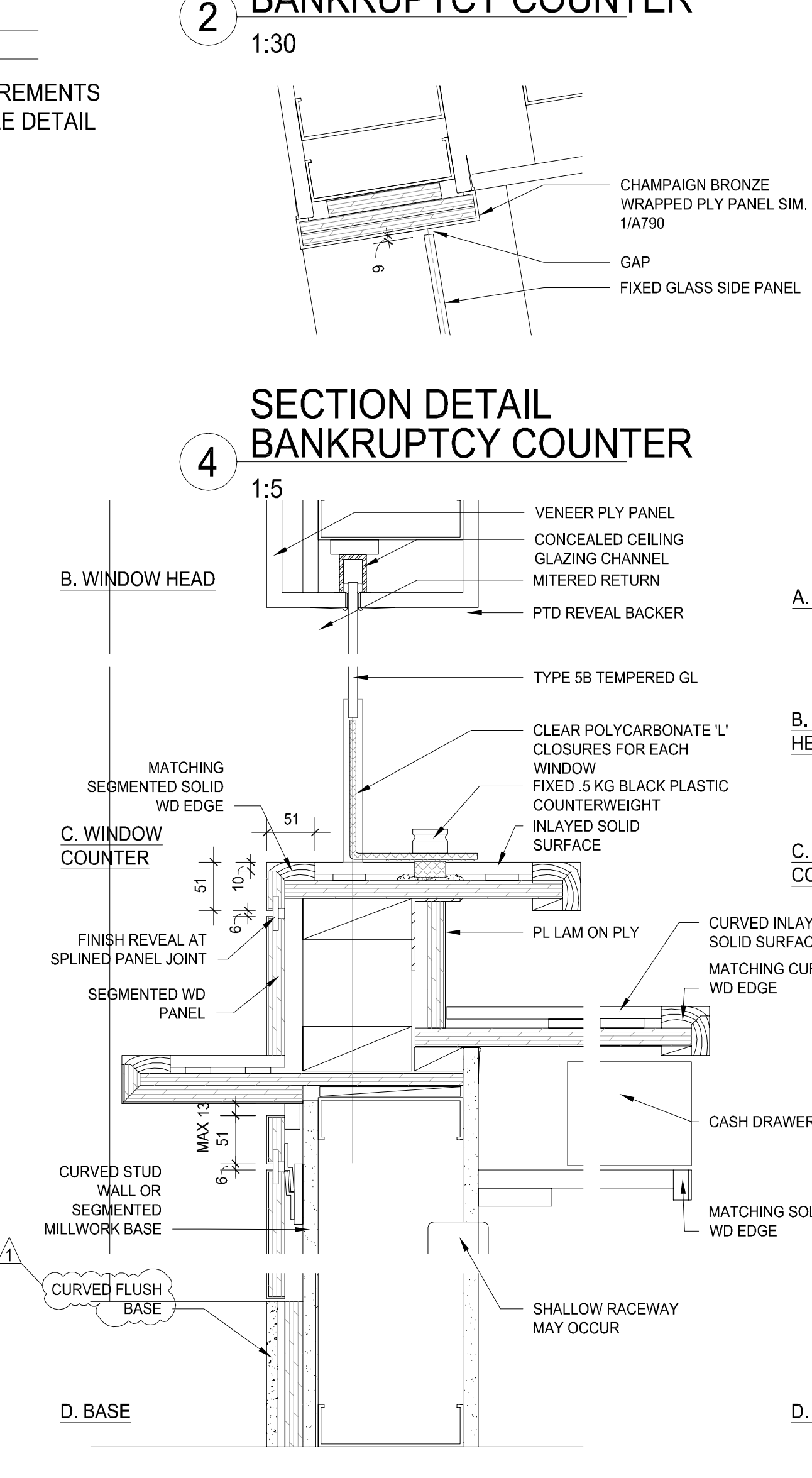
OUTSIDE DEVELOPED ELEVATION BANKRUPTCY COUNTER
1:30



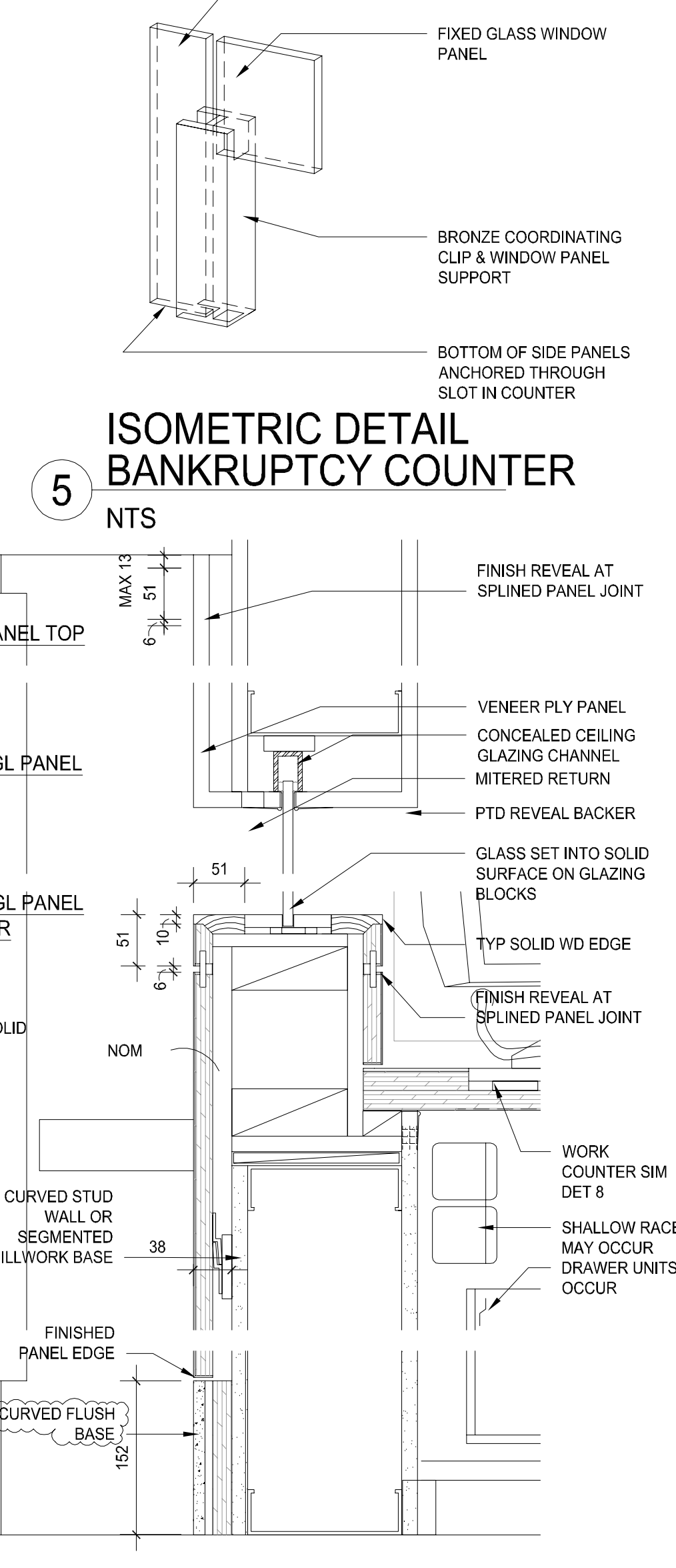
INSIDE DEVELOPED ELEVATION BANKRUPTCY COUNTER
1:30



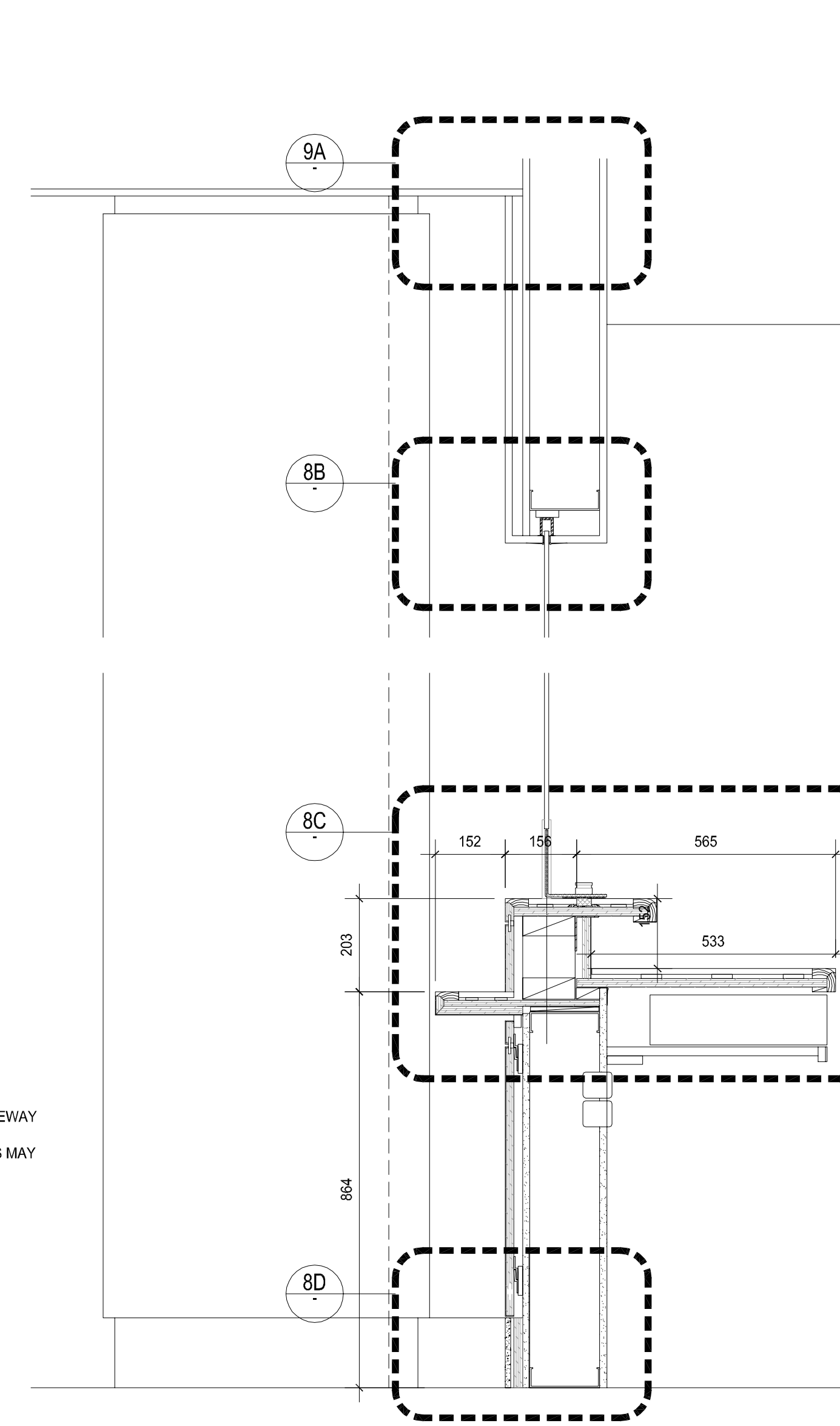
DETAIL PLAN BANKRUPTCY COUNTER
1:30



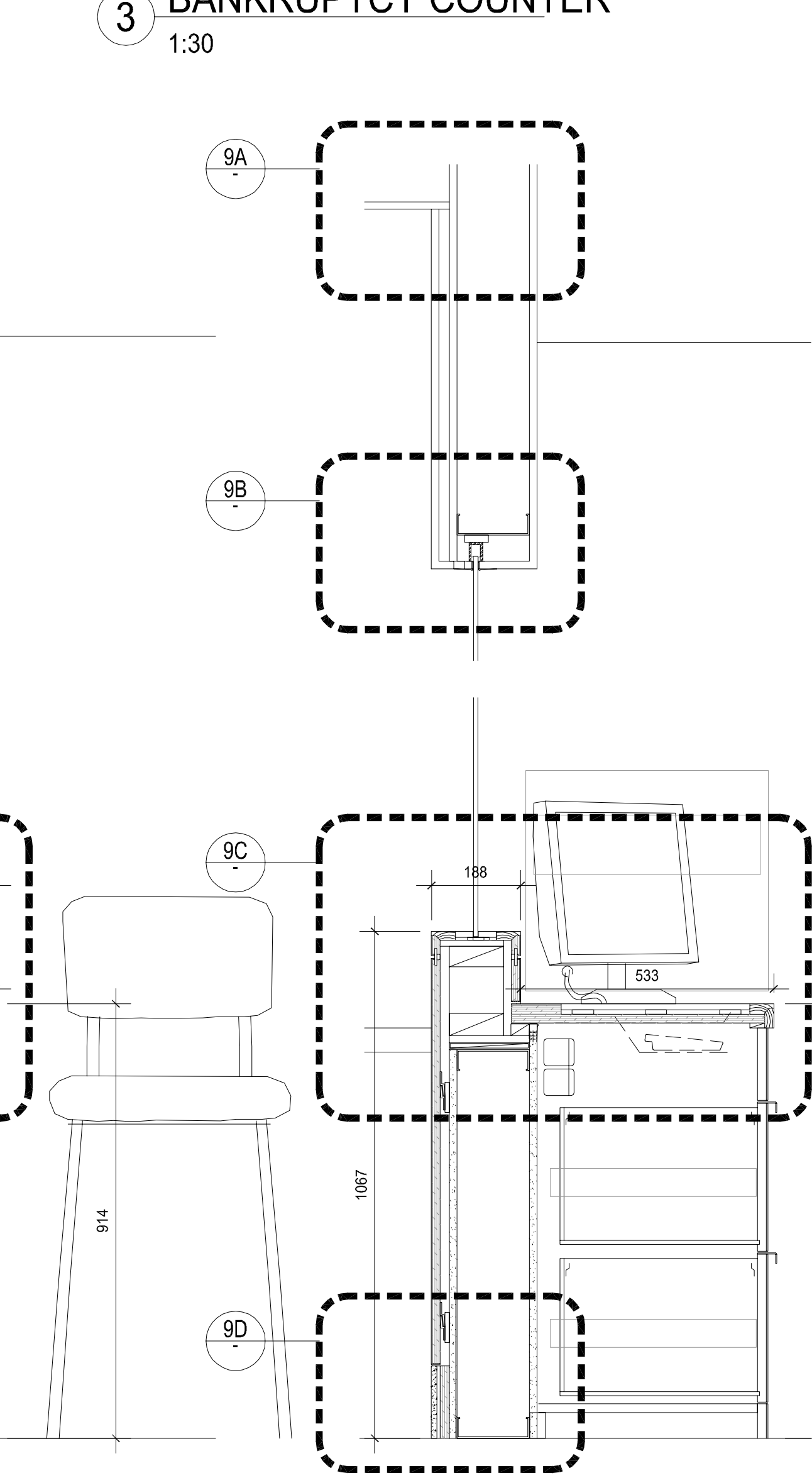
SECTION DETAIL BANKRUPTCY COUNTER
1:5



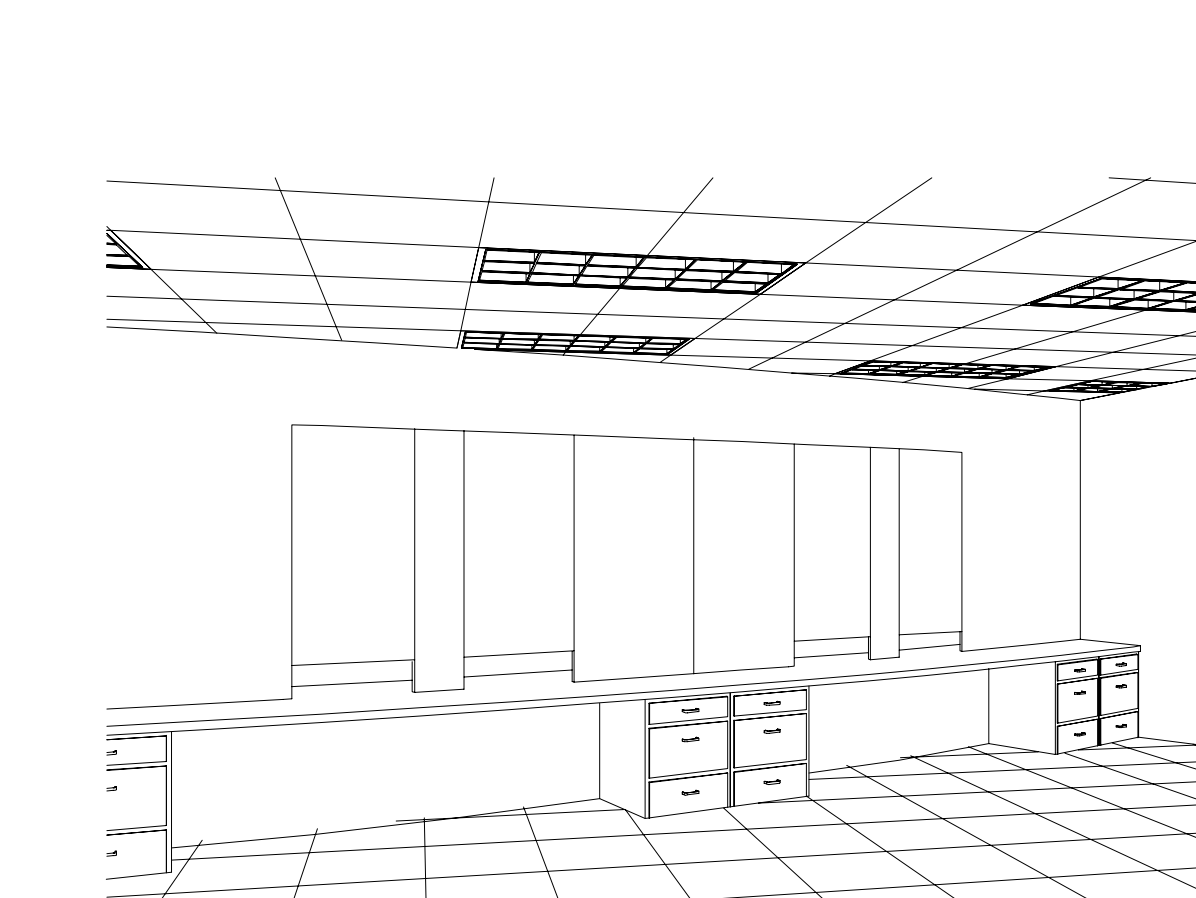
ISOMETRIC DETAIL BANKRUPTCY COUNTER
NTS



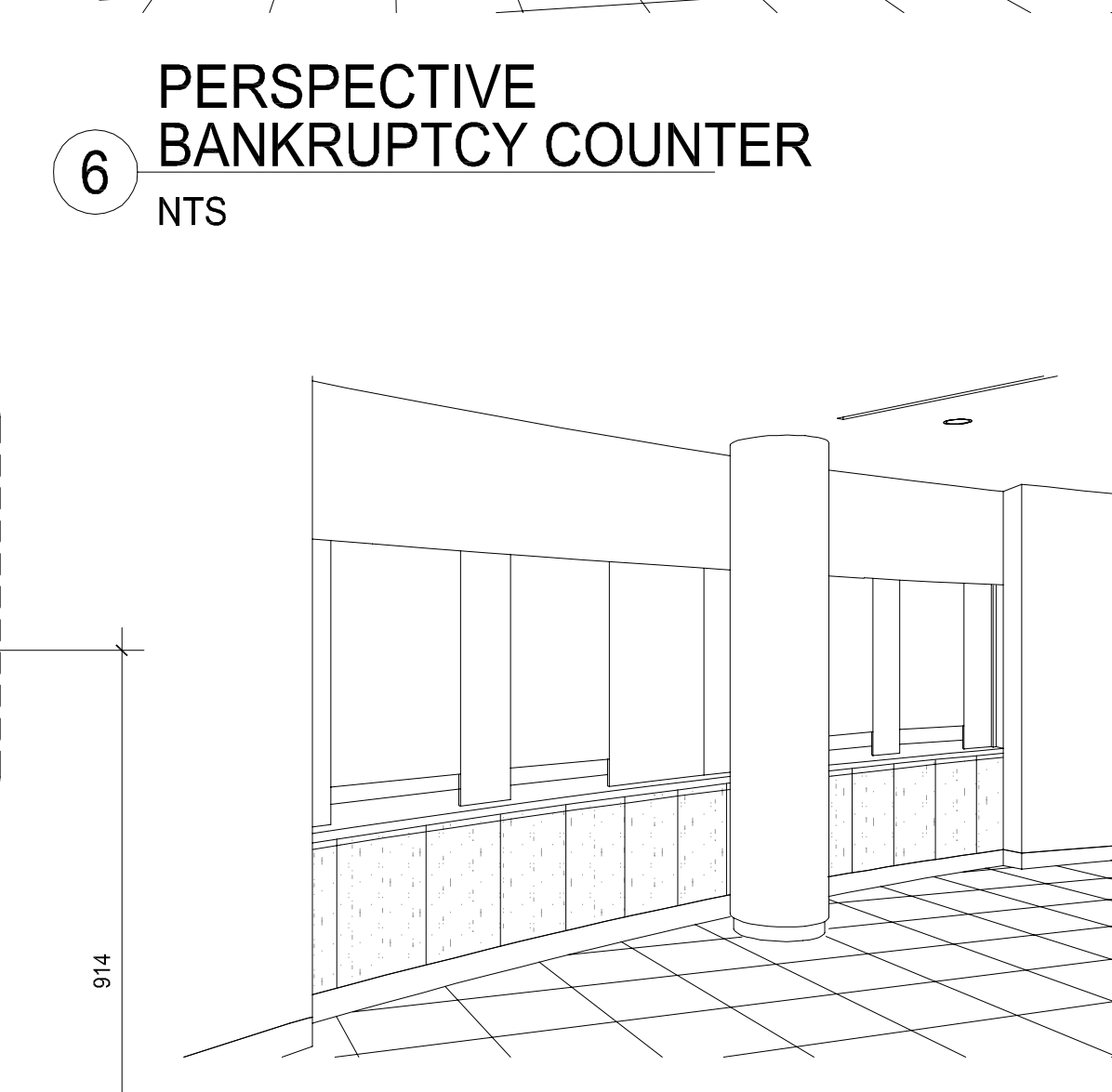
DETAIL SECTION BANKRUPTCY COUNTER
1:10



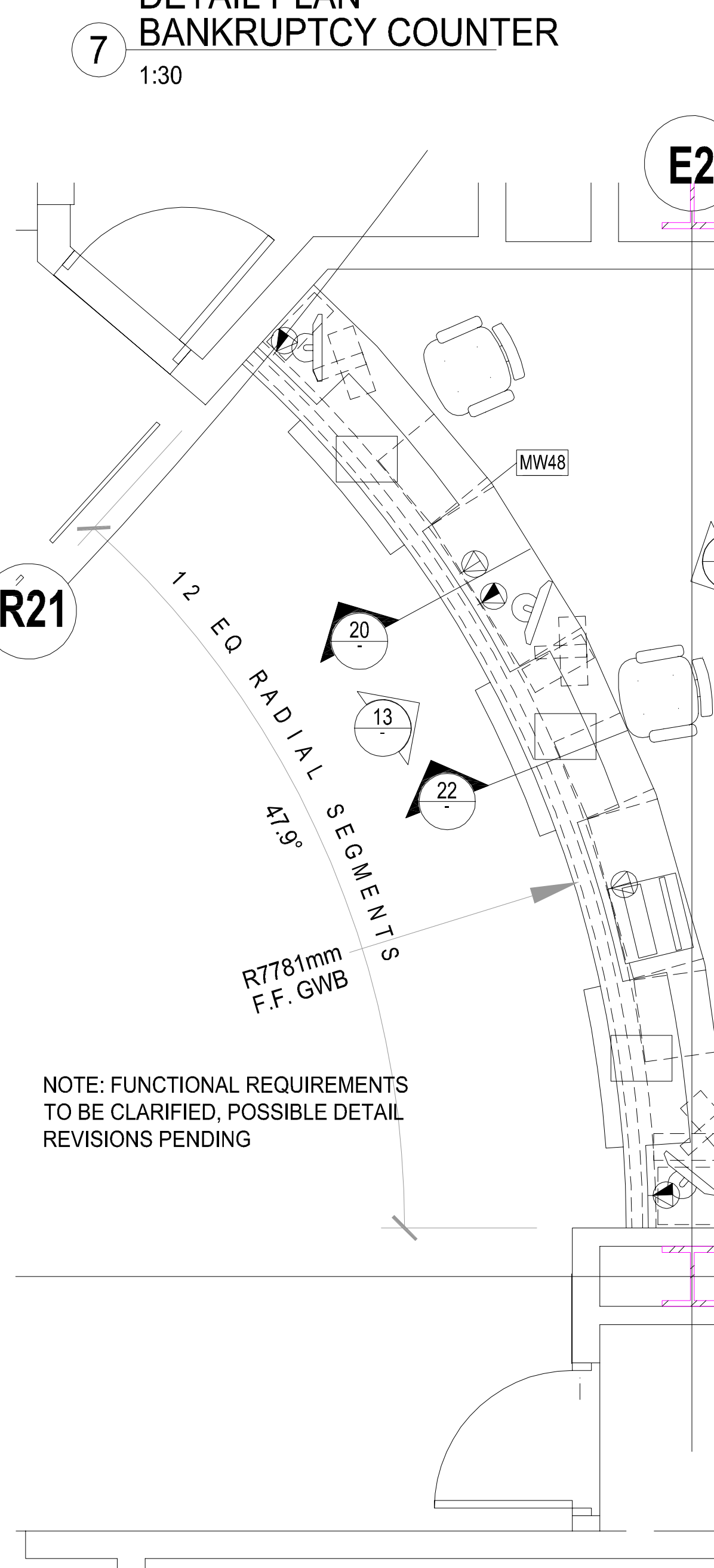
DETAIL SECTION BANKRUPTCY COUNTER
1:10



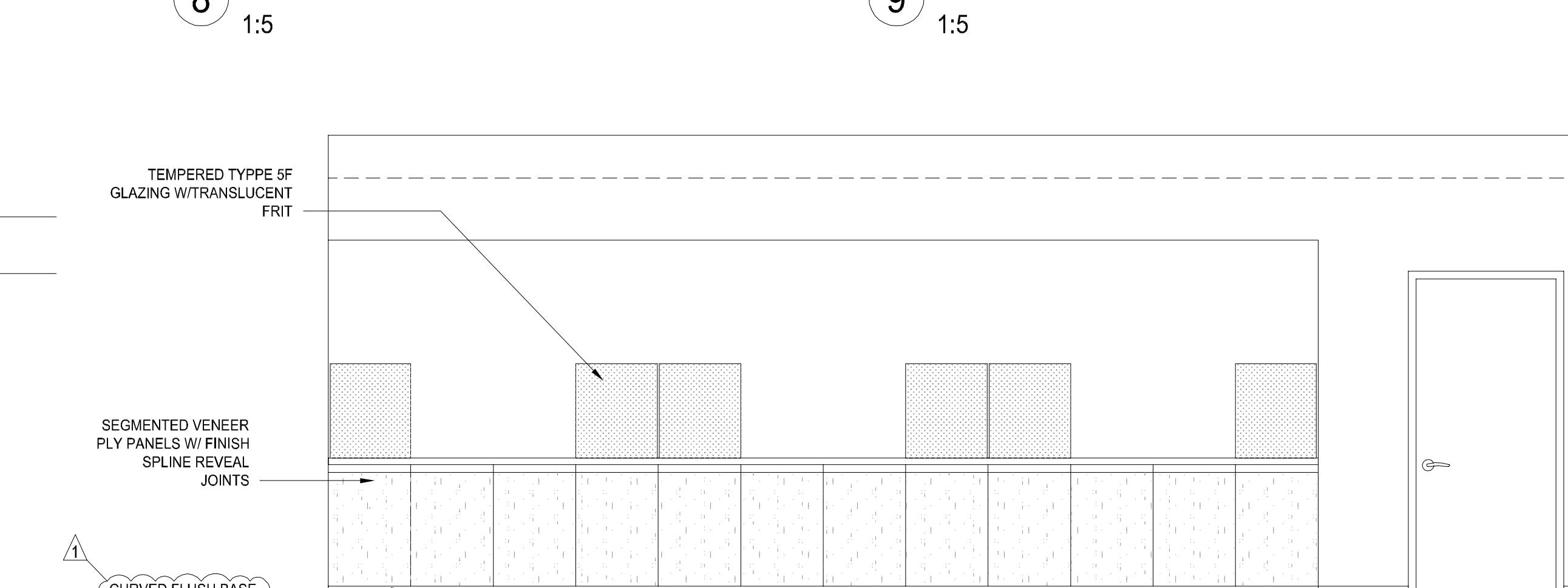
PERSPECTIVE BANKRUPTCY COUNTER
NTS



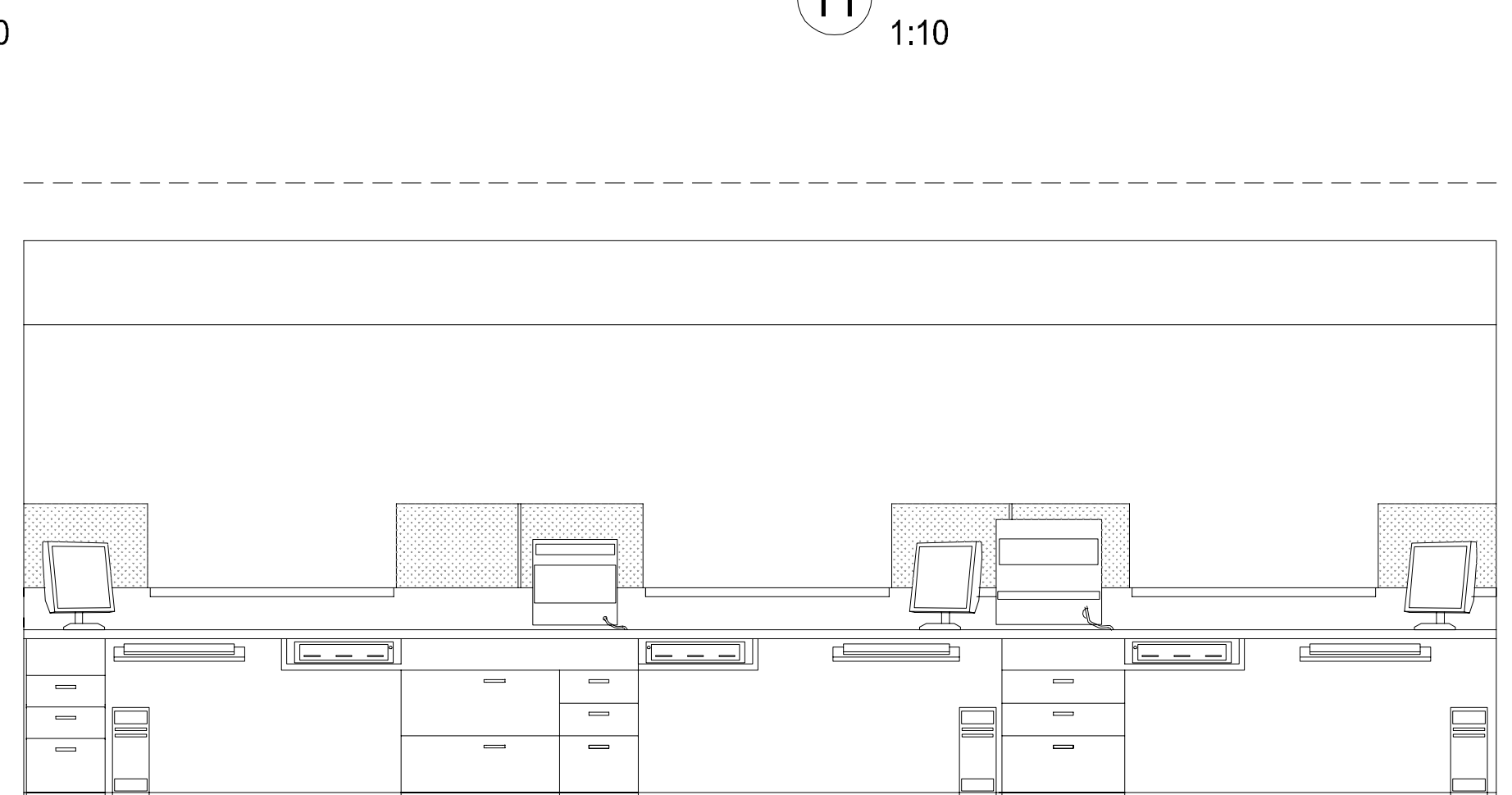
PERSPECTIVE BANKRUPTCY COUNTER
NTS



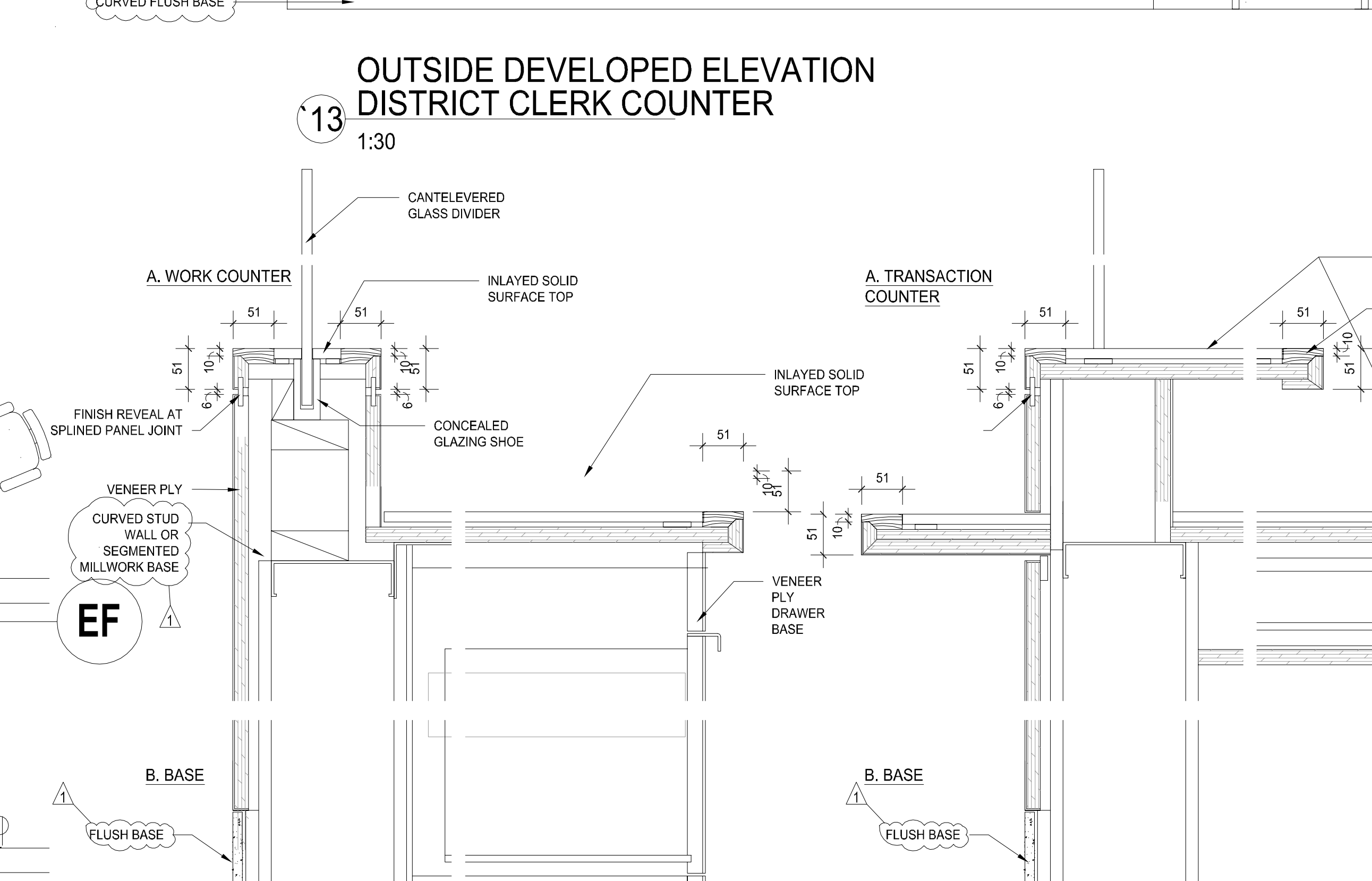
DETAIL PLAN DISTRICT CLERK COUNTER
1:30



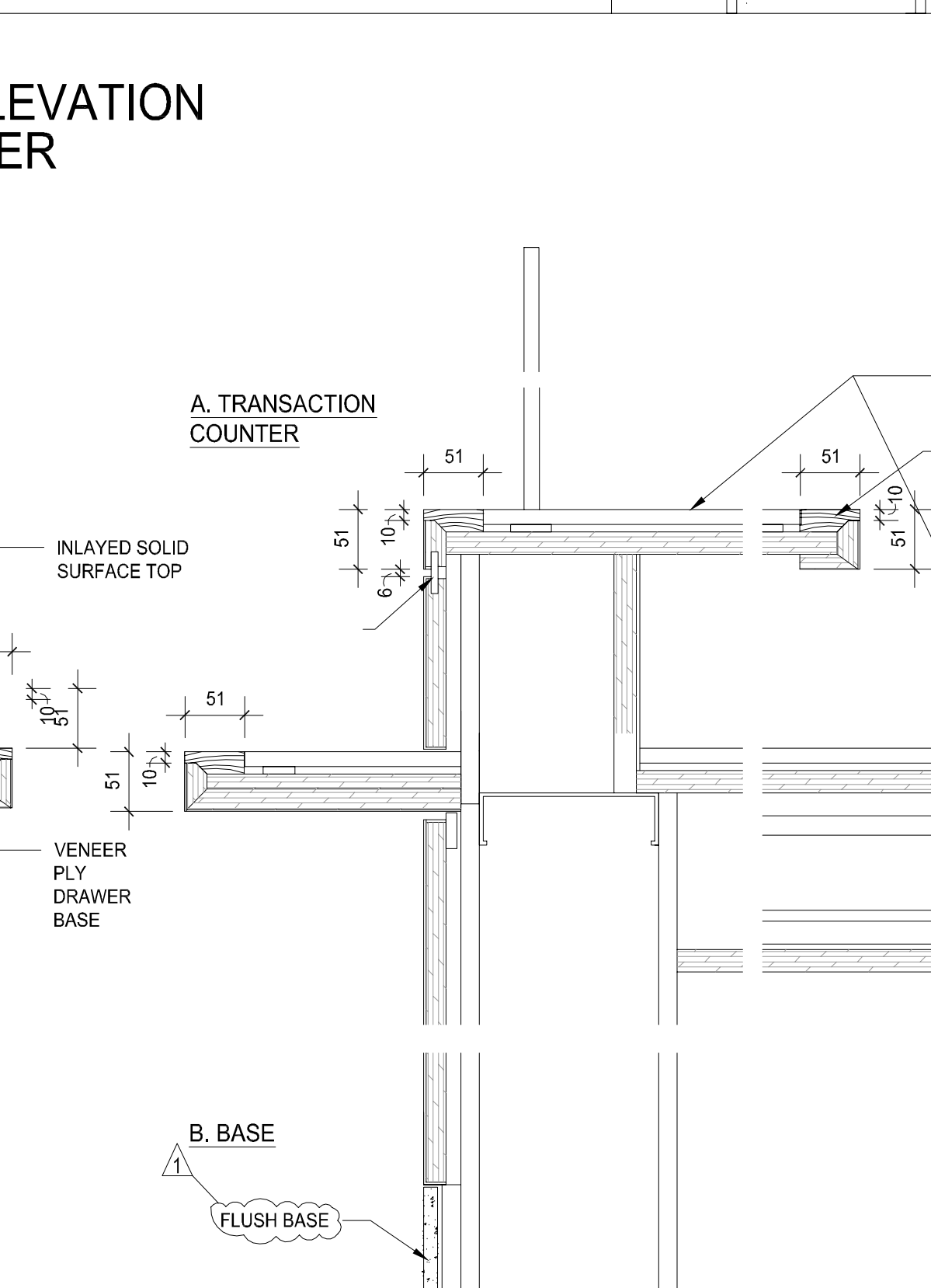
OUTSIDE DEVELOPED ELEVATION DISTRICT CLERK COUNTER
1:30



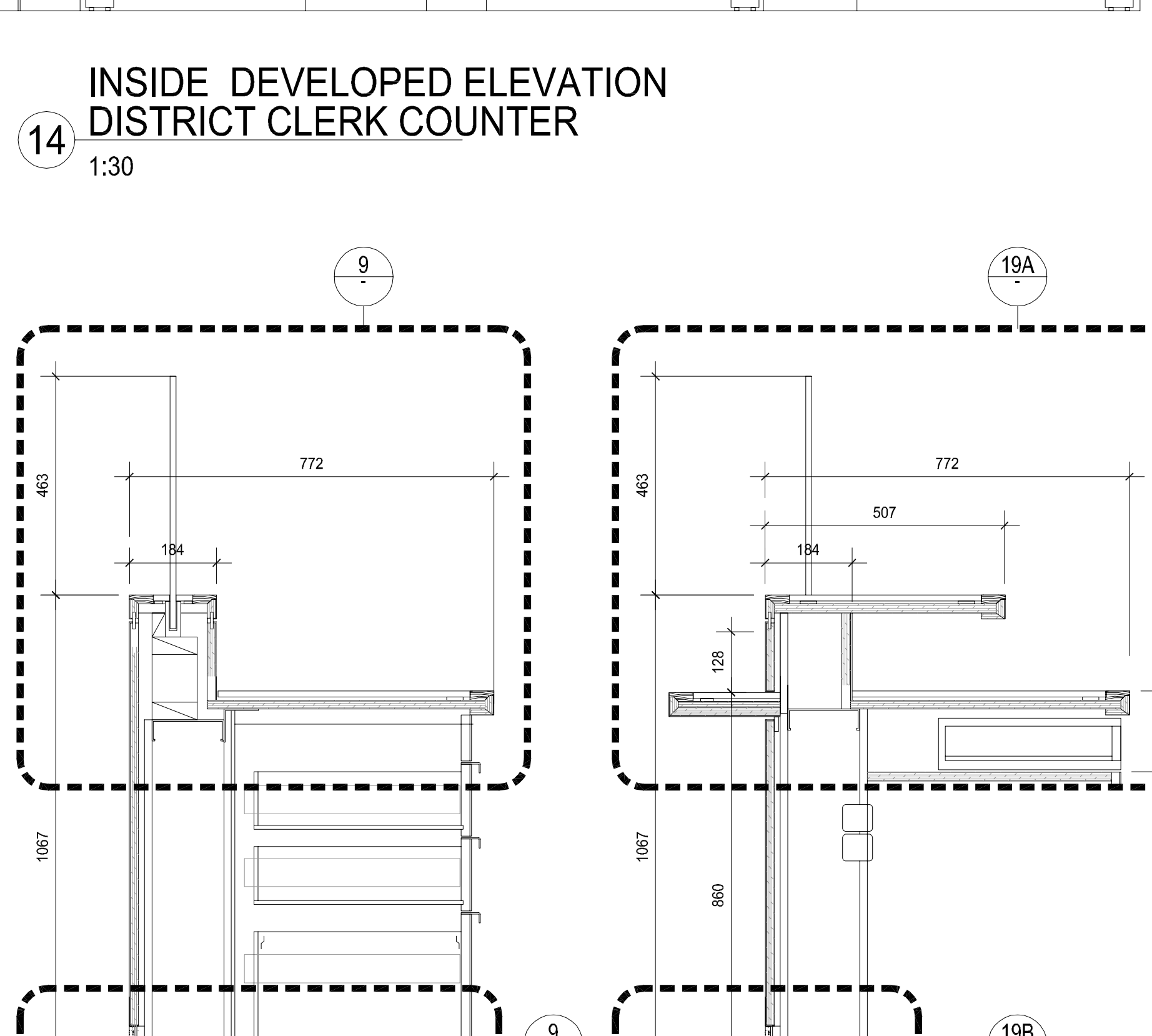
INSIDE DEVELOPED ELEVATION DISTRICT CLERK COUNTER
1:30



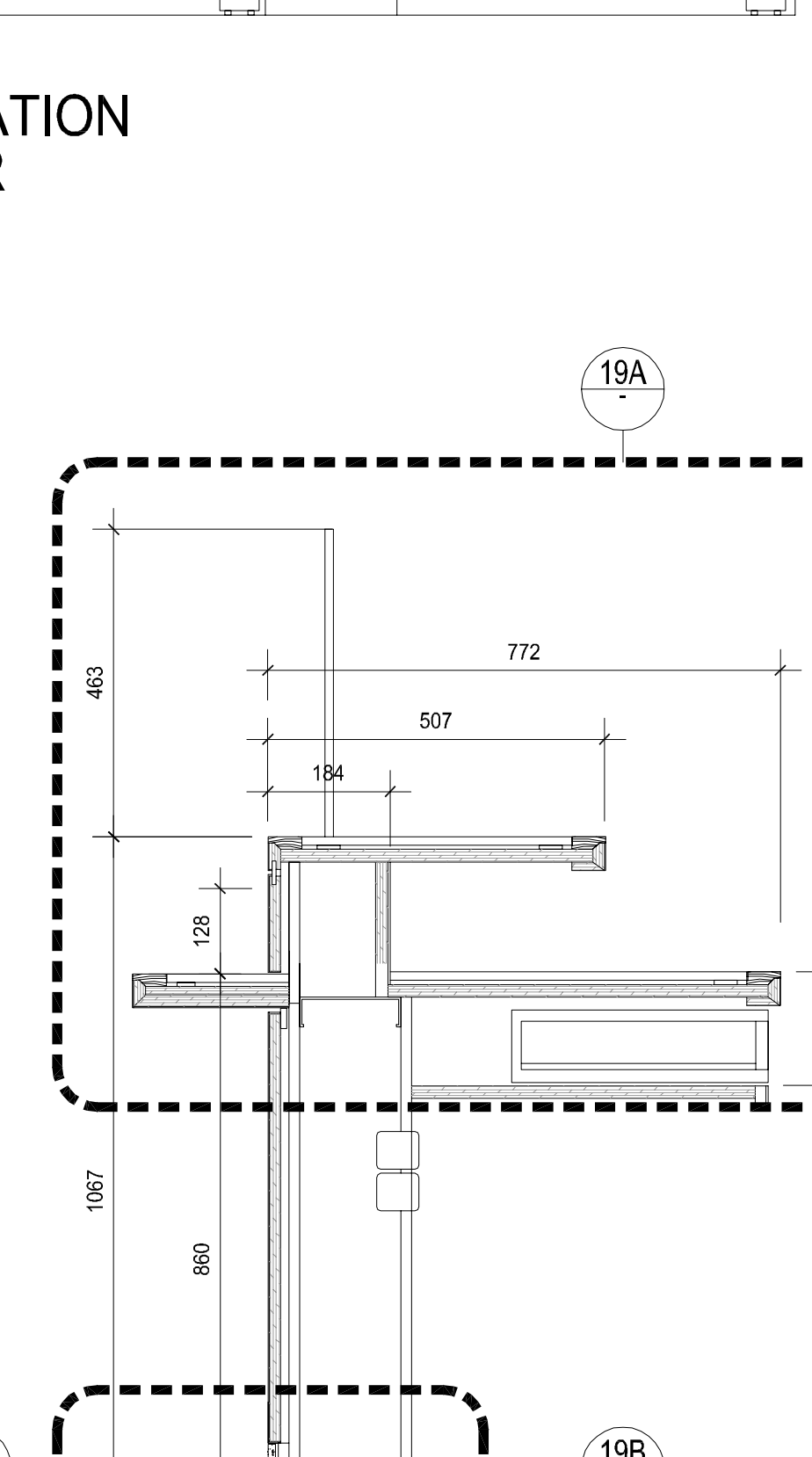
SECTION DETAIL DISTRICT CLERK COUNTER
1:5



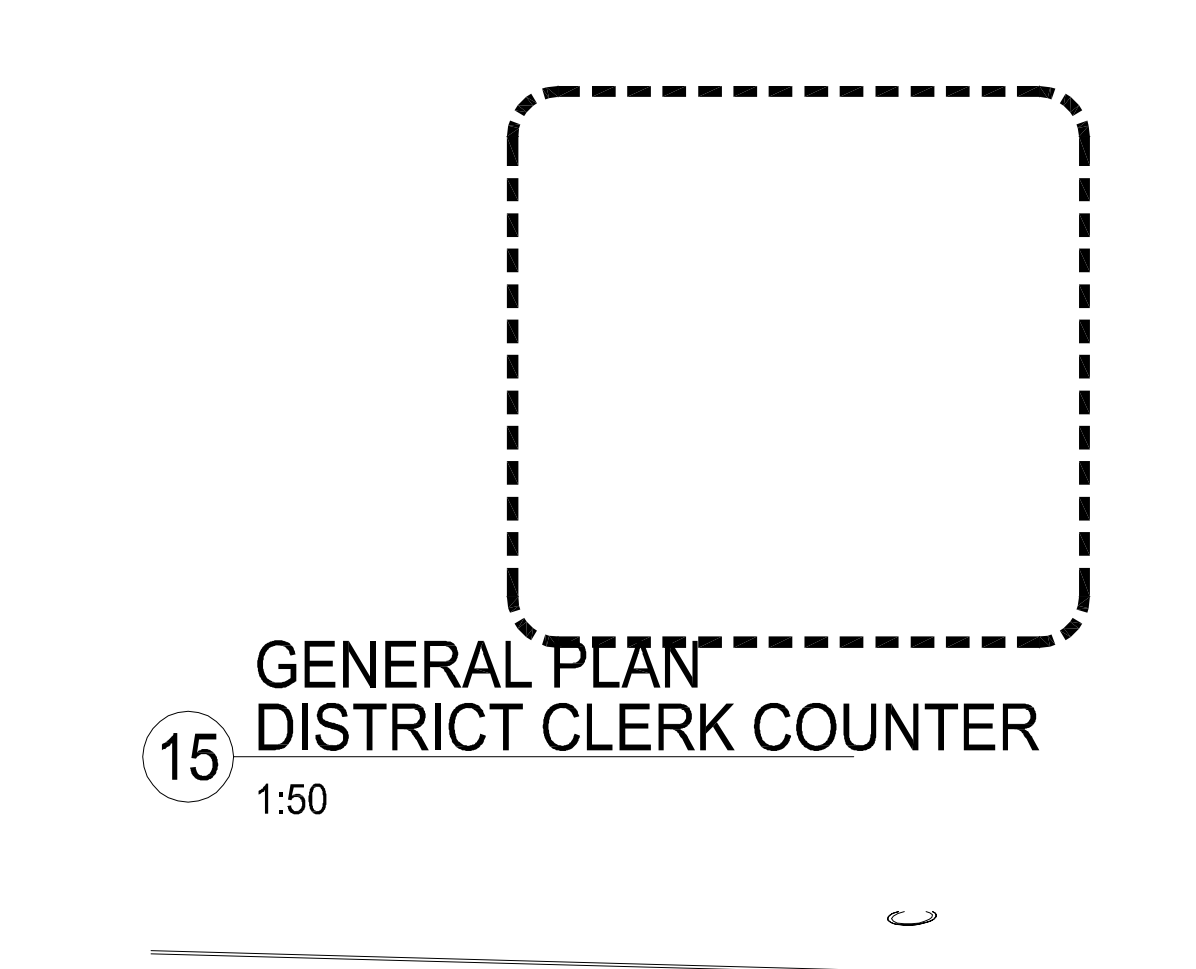
SECTION DETAIL DISTRICT CLERK COUNTER
1:5



DETAIL SECTION WORK COUNTER
1:10



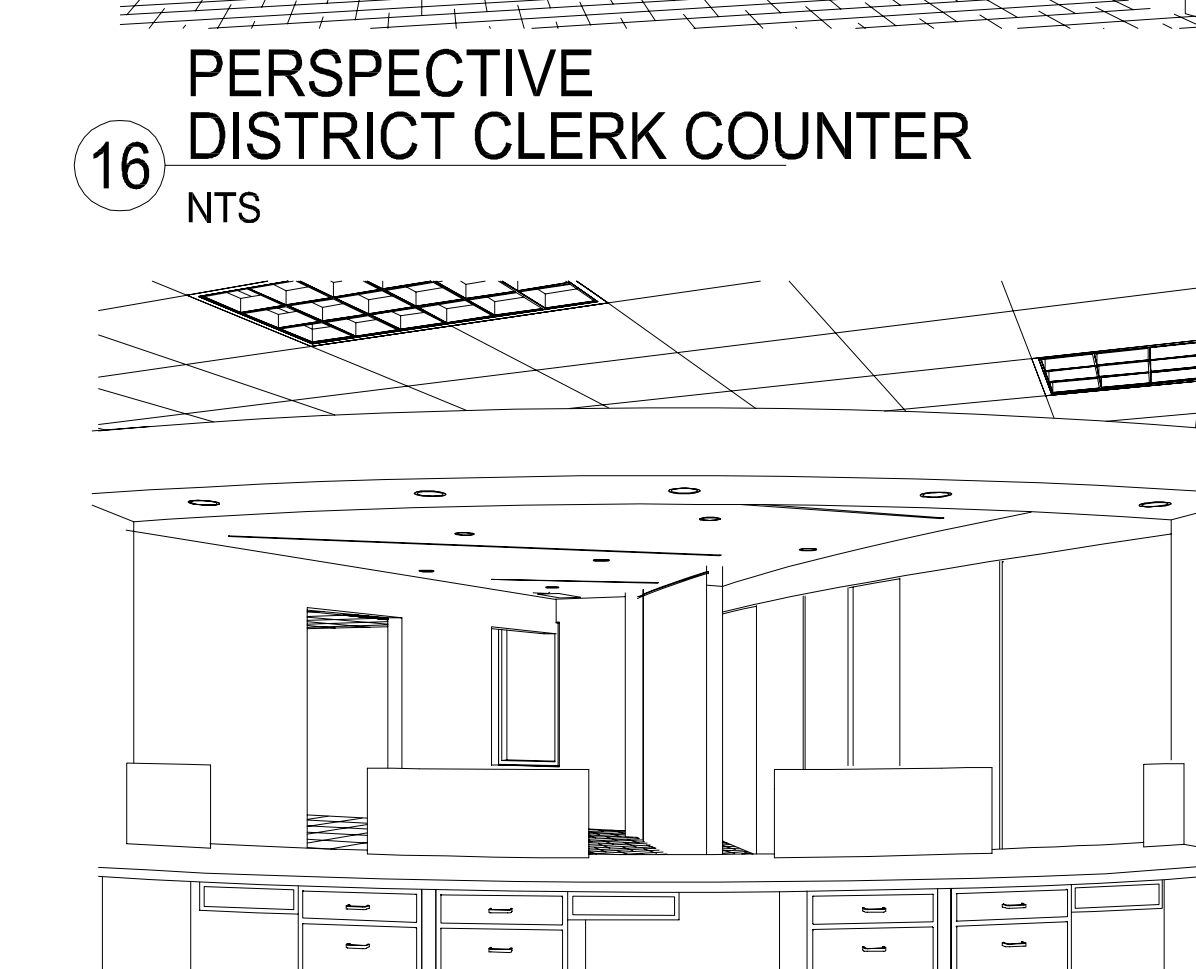
DETAIL SECTION TRANSACTION COUNTER
1:10



GENERAL PLAN DISTRICT CLERK COUNTER
1:50



PERSPECTIVE DISTRICT CLERK COUNTER
NTS



PERSPECTIVE DISTRICT CLERK COUNTER
NTS

DETAIL PLAN DISTRICT CLERK COUNTER
1:30

SECTION DETAIL DISTRICT CLERK COUNTER
1:5

SECTION DETAIL DISTRICT CLERK COUNTER
1:5

DETAIL SECTION WORK COUNTER
1:10

DETAIL SECTION TRANSACTION COUNTER
1:10

PERSPECTIVE DISTRICT CLERK COUNTER
NTS



ENGINEERING NOTE:
FABRICATOR SHALL PROVIDE FOR
PERFORMANCE ENGINEERING OF ALL
COMPONENTS FOR STRUCTURAL AND
BALLISTIC RATINGS REQUIRED AND WILL
ONLY PROCEED WITH THE WORK AFTER
APPROVAL OF ENGINEERING DESIGN
DRAWINGS SIGNED BY THE ENGINEER
RESPONSIBLE

